

BW SERIES

Sanitary Barrier Washing Machines



DURABILITY AND PROFITABILITY

The BW series washing machines are constructed from stainless steel and mechanically welded steel. Their tough materials and design ensure a long life and payback on the investment.

HEATING SYSTEMS: ELECTRIC, STEAM OR ELECTRIC + STEAM

Available in three heating options to meet each customer's needs, both for existing laundries and for new installations.

RISK OF CONTAMINATION ELIMINATED

The one-way circulation (always forward) of the linen and the impossibility of opening both doors at once avoids any contact between dirty and clean linen, eliminating the risk of contamination of clean linen.

MAXIMUM SPIN WITHOUT VIBRATION

The BWs' high spin G force leaves linen with a very low level of residual moisture, saving energy and time in the drying process. The suspension system absorbs the vibrations caused during the powerful spin process.

CASCADE EFFECT FOR A BETTER RINSE

The AISI-304 stainless steel drum has perforated blades that create a water spray effect on the clothes to improve the rinse. The drum casing is 4-5 mm thick, making it extremely robust.

DOOR LOCKING SYSTEM

The washing machines in the BW Series have an automatic door locking system with a security mechanism.

AUTOMATIC DRUM-DOOR ALIGNMENT

Drum rotation operations are automatic. This ensures perfect alignment between the inside and outside doors.

DISPENSERS

All the BW Series have 4 compartments for chemicals, which can be added in liquid or powder form.

ERGONOMICS

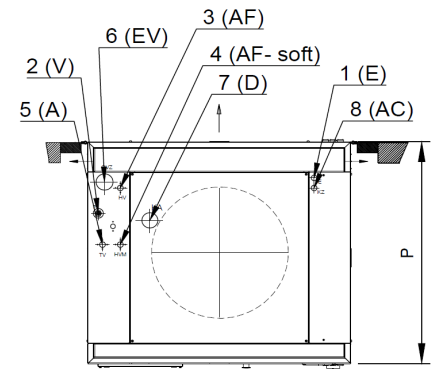
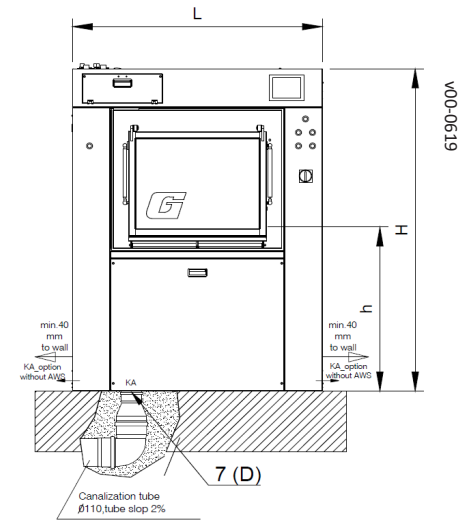
The height of the door and its opening system offer the user excellent ergonomics when loading and unloading linen. Moreover, as it has a compartmented drum it can work with loads of different sizes.

OPTIONS

- Stainless steel panels (BW160 to BW450)
- 1 extra compartment
- Stainless steel pedestal
- Fourth water inlet
- Second drain
- Dosing through 5 inlets
- Inlet for sample-taking
- Pneumatic steam valve (BW160 to BW840)
- Water recycling system
- Automatic weighing system (XV1057)
- Second screen (XV1057 or Inteli Concept)
- HMSS (Hygiene Monitoring Software)
- Other voltages *

		BW260 E	BW260 V	BW260 E+V
General specifications				
Capacity (1:10)	kg	26		
Capacity (1:9)	kg	29		
Drum volume	dm ³	262		
Drum diameter	mm	800		
Drum length	mm	600		
Static force	kg	890		
Sound Level	dB(A)	55-70		
Heat Emission	kW	0.72	1.5	
Speeds				
Wash Speed	rpm	41		
Extraction Speed	rpm	915		
G factor	-	375		
Could Water (AF)/ Hot Water (A)				
Connection Ø	in	3/4		
Rec. Pressure	bar	2-6		
Flow at 4 bar	l/min	120		
Consumption- Cold water*	l/cycle	201		
Consumption- Hot water*	l/cycle	86		
Maximum Temperature	°C	80		
Drainage (D)				
Gravity drainage Ø	mm	76		
Steam (V)				
Heating connection	kW	-	50	
Connection Ø	in	-	1/2	
Recommended pressure	bar	-	4-8	
Flow	kg/h	-	91	
Consumption avrg	kg/cycle	-	8	
Consumption Peak (max.)	kg/min	-	2,5	
External dosing (d)				
Connection Ø	mm	8		
Electric (E)				
Electric connection	kW	28.5	4.5	28.5
Heating connection	kW	24	-	-
Tension	-	3x400V 50/60Hz	3x400V 50/60Hz	3x400V 50/60Hz
Motor power	kW	4		
Protection (ext. Switch)	A	50	20	50
Air Outlet (EV)				
Exhaust diameter	mm	75		
Compressed Air (AC)				
Connection Ø	DN	-		
Pressure	bar	-		
Flow	l/min	-		
Consumption	l/h	-		
Dimensions (without packaging)				
Width (L)	mm	1250		
Depth (P)	mm	1100		
Height (H)	mm	1668		
Loading door opening (WxH)	mm	TBC		
Height door base to floor (h)	mm	850		
Weight (without packaging)				
Net	kg	760		
Gross	kg	799		

Note: Consumptions based on main wash at 60 °C and inlet water at 18 °C



MACHINE LAYOUT	
	DESCRIPTION
1	(E) Electrical connection
2	(V) Steam connection
3	(AF) Cold water connection
4	(AF) Cold soft water connection
5	(A) Hot water connection
6	(EV) Vapour outlet connection
7	(D) Drain connection
8	(AC) Compressed air connection